



# KINGROON

## KLP1

### 快速拆机引导指南卡

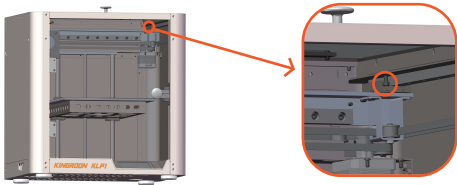
### Quick Disassembly Guide Card



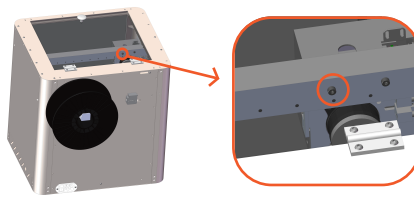
KINGROON 3D

## XYZ轴解锁 Unlocking XYZ Axis

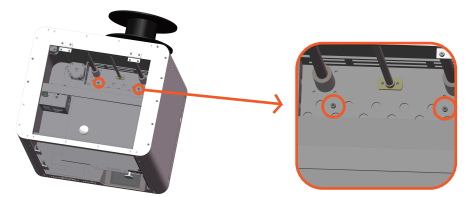
- 1** 第一步：取下Y轴上的银色固定螺丝  
Step 1: Remove the silver-colored fixing screws from the Y-axis



- 2** 第二步：取下X轴上的银色固定螺丝  
Step 2: Remove the silver-colored fixing screws from the X-axis.

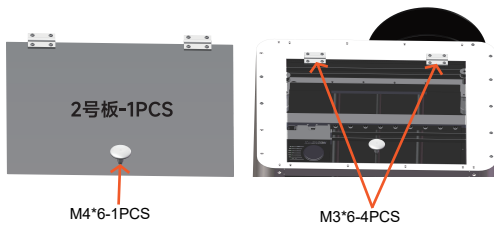


- 3** 第三步：取下Z轴热床支架上的银色固定螺丝  
Step 3: Remove the silver-colored fixing screws from the Z-axis heated bed support.

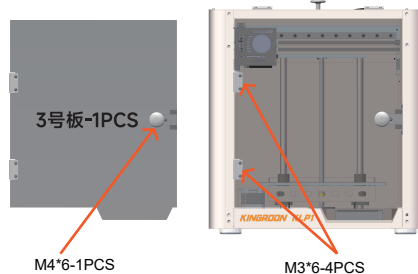


## 组装教程 Assembly Guide

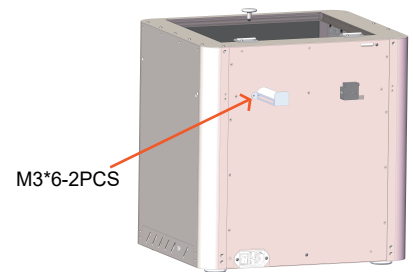
- 4** 第四步：撕开2号板保护膜，  
使用1个M4\*6螺丝将把手固定在2号板上。  
使用4个M3\*6螺丝将2号板固定在机器顶部。  
Step 5: Peel off the protective film from Board 2.  
Use 1 M4\*6 screw to attach the handle to Board 2.  
Use 4 M3\*6 screws to secure Board 2 on the top of the machine.



- 5** 第五步：撕开3号板保护膜，  
使用1个M4\*6螺丝将把手固定在3号板上。  
使用4个M3\*6螺丝将3号板固定在机器正面。  
Step 6: Peel off the protective film from Board 3.  
Use 1 M4\*6 screw to attach the handle to Board 3.  
Use 4 M3\*6 screws to secure Board 3 on the front of the machine.



- 6** 第六步：  
使用M3\*6螺丝将耗材架固定在机器背面。  
Step 7: Use M3\*6 screws to secure the filament holder at the back of the machine.



### 注意事项：

本快速引导卡仅限于打印前准备，正式打印前务必查阅U盘中的电子版或者纸质版的说明书。  
为了达到更好的打印效果，请按照说明书将切片软件参数正确导入。

### Notes:

This quick guide is only for pre-printing preparation.  
Before printing, make sure to consult the electronic or paper version of the instruction manual on the USB drive.






1、请勿在通电状态下操作主板和转接板,非专业玩家请勿随意更改配置文件。

1、Do not operate the motherboard and adapter board while the power is on. Non-professional users should not modify configuration files without proper knowledge.

2、归零和打印前一定要将磁钢贴放在热床上,否则喷嘴会撞击热床并损坏它(Z轴接近开关只能探测金属,所以务必要放置磁钢贴)

2、Before homing and printing, make sure to place the magnetic sticker on the heat bed; otherwise, the nozzle will collide with the heat bed and cause damage. (The Z-axis proximity switch can only detect metal, so it is necessary to place the magnetic sticker.)

3、不建议手动拔插更换耗材。

1. 点击装载耗材(自动进料), 请将高速打印耗材穿过断料检测器, 送达挤出机, 点击控制  → 挤出机  → 载入耗材 , 等待触摸屏显示到达目标温度后, 稍微用力将耗材往里送至挤出轮边上, 等待喷嘴有耗材挤出。

2. 点击退出耗材(自动退料), 点击控制  → 挤出机  → 卸载 , 此过程大概需要5分钟, 等待目标温度为60度以下或者鼓风机自动关闭后, 将耗材直接拔出。过程中请勿断电或进行其他操作。

3, It is not recommended to manually plug and unplug the filament. When loading the filament, follow the instructions to preheat the extruder and then feed the filament. When unloading the filament:

1, Click loading Filament( automatic filament feeding), pls thread the high-speed printing filament through the filament sensor and feed it to the extruder. Click Control→Extruder→Load Filament. Wait for the touchscreen to display the target temperature. Gently push the filament toward the extruder wheel and wait for filament to be extruded from the nozzle.

2, Click Unload filament( Automatic filament unloading), Click Control→Extruder→Unload. This process will take about 5 minutes.

Wait for the target temperature to be below 60C or the blower to automatically turn off, then pull out the filament directly.

Pls do not power off or perform other actions during this process

4、为了打印效果, 请使用kingroon高速打印耗材, 或者第三方高速打印耗材, 使用第三方普通打印耗材可能会引发其他问题。

使用第三方耗材的时候, 打印温度请参照所购买耗材盘上的温度范围设置, 一般情况下出现气泡或者严重层纹, 请适当降低打印温度或者降低打印层厚, 出现断层适当增加打印温度。

4、For better printing results, please use kingroon high-speed filament or third-party high-speed filament.

Using third-party regular filament may cause other issues. When using third-party filament, refer to the temperature range on the filament spool for printing temperature settings. In general, if you encounter bubbles or severe layer lines, you can try reducing the printing temperature or decreasing the layer thickness. If there are layer adhesion issues, increase the printing temperature accordingly.

5、每台3D打印机在出厂前都已经经过测试。如果喷嘴还有一点耗材或者打印列表有任务这是正常现象, 不会影响性能。

5、Each 3D printer has undergone testing before leaving the factory. It is normal to have a small amount of filament residue in the nozzle or tasks in the print queue, and it will not affect performance.

6、初次使用请检查您的使用电压, 一般情况下出厂都会调整到正确的电压, 但不排除跨国使用, 中国220V 美日110V, 电压调整位置在机箱的右侧, 拨动电源110V/220V即可调整, 如果使用了错误的电压会导致电源和主板损坏, 请一定检查。

6, For initial use, please check your operating voltage. Usually, the machine is adjusted to the correct voltage at the factory. However, in case of international usage, such as China (220V) or the US/Japan (110V), you can adjust the voltage on the right side of the machine case by switching the power between 110V and 220V. Using the wrong voltage can cause damage to the power supply and motherboard, so please make sure to check.

7、快速打印需要每个轴以极高频率运动, 所以会产生运动噪音; 且该模式需要更强劲的散热以保障打印质量, 故采用了高转速风扇, 可以根据需要参考说明书修改驱动器的静音模式或者高速模式。

7, Fast printing requires high-frequency movement of each axis, resulting in some noise. Additionally, this mode requires stronger cooling to ensure printing quality, which is why high-speed fans are used. You can refer to the manual to modify the driver's silent mode or high-speed mode according to your needs.

8、在产品使用前务必要首先需要自动调平, 自动调平前需要先调整喷嘴和热床的偏移值, 一般是一张纸的厚度, 再进行自动调平, 可使用此卡片作为参考, 详细使用教程请查看说明书。

8, Before using the product, it is essential to perform automatic bed leveling. Before the automatic bed leveling process, adjust the nozzle and bed offset value, which is generally the thickness of a piece of paper. Then proceed with the automatic bed leveling process. You can use the provided card as a reference. For detailed instructions, please consult the user manual.

